

DEPARTMENT OF THE ARMY TECHNICAL MANUAL

DIRECT SUPPORT AND GENERAL SUPPORT MAINTENANCE
 REPAIR PARTS AND SPECIAL TOOLS LISTS (INCLUDING
 DEPOT MAINTENANCE REPAIR PARTS AND SPECIAL TOOLS)
 ANTENNA COUPLER CU-119/FR AND CU-119A/FR
 (FSN 5920-224-4305)

Headquarters, Department of the Army, Washington, D.C.

28 February 1975

Current as of December 1974

	Paragraph	Page
SECTION I. INTRODUCTION		
Scope	1-1	2
General	1-2	2
Explanation of columns	1-2	2
Special information	1-4	4
Location of repair parts	1-6	4
Abbreviations (Not applicable)	1-6	4
Reporting of equipment publication improvements	1-7	4
II. REPAIR PARTS LIST		6-15
III. SPECIAL TOOLS, TEST AND SUPPORT EQUIPMENT (Not applicable)		
IV. INDEX-FEDERAL STOCK NUMBER AND REFERENCE NUMBER, CROSS- REFERENCE TO FIGURE AND ITEM NUMBER		16

• This manual supersedes TM 11-5820-381-35P, 1 March 1960.

SECTION I

INTRODUCTION

1-1. Scope

This manual lists repair parts and special tools required for the performance of direct support, general support, and depot maintenance of the CU-119/FR and CU-119A/FR. The PCCN for the equipment is GCTADY for all models.

1-2. General

This repair parts and special tools list is divided into the following sections:

a. Repair Part8 List-Section II. A list of repair parts authorized for the performance of maintenance at the direct support, general support, and depot level. This repair parts list is arranged in alphabetical order.

b. Special Tools, Test and Support Equipment -Section III. Not applicable.

c. Index-Federal Stock Number and Reference Number Cross-Reference to Figure and Item Number-Section IV. A list, in ascending numerical sequence, of all Federal stock numbers appearing in the listings, followed by a list, in alphanumeric sequence, of all reference numbers appearing in the listings. Federal stock number and reference numbers are cross-referenced to each illustration figure and item number or reference designation appearance.

1-3. Explanation of Columns

The following provides an explanation of columns found in the tabular list.

a. Source, Maintenance, and Recoverability Code8 (SMR) .

(1) **Source code.** Indicates the manner of acquiring support items for maintenance, repair, or overhaul of end items. Source codes are-

Code	Explanation
PA	-Item procured and stocked for anticipated or known usage.
PC	-Item procured and stocked for insurance purposes because essentiality dictates that a minimum quantity be available in the supply systems.

Code	Explanation
PC	-Item procured and stocked and which otherwise would be coded PA except that it is deteriorative in nature.
PD	-Support item, excluding support equipment, procured for initial issue or outfitting and stocked only for subsequent or additional initial issues or outfittings. Not subject to automatic replenishment.
PE	-Support equipment procured and stocked for initial issue or outfitting to specified maintenance repair activities.
PF	-Support equipment which will not be stocked but which will be centrally procured on demand.
PG	-Item procured and stocked to provide for sustained support for the life of the equipment. It is applied to an item peculiar to the equipment which because of probable discontinuance or shutdown of production facilities would prove uneconomical to reproduce at a later time.
KD	-An item of depot overhaul/repair kit and not purchased separately. Depot kit defined as a kit that provides items required at the time of overhaul or repair.
KF	-An item of a maintenance kit and not purchased separately. Maintenance kit defined as a kit that provides an item that can be replaced at organizational or direct support or general support levels of maintenance.
KB	-Item included in both a depot overhaul/repair kit and a maintenance kit.
MO	-Item to be manufactured or fabricated at organizational level.
MF	-Item to be manufactured or fabricated at direct support maintenance level.
MH	-Item to be manufactured or fabricated at general support maintenance level.
MD	-Item to be manufactured or fabricated at depot maintenance level.

Code	Explanation
A0	-Item to be assembled at organizational level.
AF	-Item to be assembled at direct support maintenance level.
AH	-Item to be assembled at general support maintenance level.
AD	-Item to be assembled at depot maintenance level.
XA	-Item is not procured or stocked because the requirements for the item will result in the replacement of the next higher assembly.
XB	-Item is not procured or stocked. If not available through salvage, requisition.
XC	-Installation drawing, diagram instruction sheet, field service drawing, that is identified by manufacturers' part number.
XD	-Support items can be requisitioned with justification. .

NOTE

Cannibalization *or* salvage may be used as a source of supply for any items source coded above except those coded XA and aircraft support items as restricted by AR 700-42.

(2) **Maintenance code.** Maintenance codes are assigned to indicate the levels of maintenance authorized to USE and REPAIR support items. The maintenance codes are entered in the third and fourth positions of the Uniform SMR Code Format as follows-

(a) Use (third **position**). The maintenance code entered in the third position indicates the lowest maintenance level authorized to remove, replace, and use the support item. The maintenance code entered in the third position indicates one of the following levels of maintenance.

Code	Application/Explanation
0	-Support item is removed, replaced, used at the organization level of maintenance.

NOTE

A code "C" may be used in this position to denote crew or operator maintenance performed within organizational maintenance.

F	-Support item is removed, replaced, used at the direct support maintenance level.
H	-Support item is removed, replaced, used at the general support maintenance.
D	-Support items that are removed, replaced, used at depot only.

(b) **Repair (fourth position).** The main-

tenance code entered in the fourth position indicates whether the item is to be repaired and identifies the lowest maintenance level with the capability to perform complete repair (i.e., all authorized maintenance functions). When a maintenance code is not used a dash (-) sign is entered. For multi-service equipment/systems or when a code is entered, this position will contain one of the following maintenance codes as assigned by the service(s) that require the code-

Code	Application/Explanation
0	-The lowest maintenance level capable of complete repair of the support item is the organizational level.
F	-The lowest maintenance level capable of complete repair of the support item is direct support.
H	-The lowest maintenance level capable of complete repair of the support item is general support.
D	-The lowest maintenance level capable of complete repair of the support item is the depot level.
L	-Repair restricted to designated Specialized Repair Activity.
Z	-Non-repairable. No repair is authorized.
B	-No repair is authorized. The item may be reconditioned by adjusting, lubricating, etc., at the user level. No parts or special tools are procured for the maintenance of this item.

(3) **Recoverability code.** Recoverability codes are assigned to support items to indicate the disposition action on unserviceable items. The recoverability code is entered in the fifth position of the uniform SMR Code Format as follows-

Code	Explanation
Z	-Nonrepairable item. When unserviceable, condemn and dispose at the level indicated in the first digit of the maintenance code.
0	-Repairable item. When uneconomically repairable, condemn and dispose at organizational level.
F	-Repairable item. When uneconomically repairable, condemn and dispose at the direct support level.
H	-Repairable item. When uneconomically repairable, condemn and dispose at the general support level.
D	-Repairable item. When beyond lower level repair capability, return to depot. Condemnation and disposal not authorized below depot level.

L -Repairable item. Repair, condemnation, and disposal not authorized below depot/ Specialized Repair Activity level.

A -Item requires special handling or condemnation procedures because of specific reasons (i.e., precious metal content high dollar value, critical material or hazardous material).

b. *Federal Stock Number.* Indicates the Federal stock number assigned to the item.

NOTE

For requisitioning purposes, the Federal stock number must be converted to the National stock number by adding "-00-" after the Federal stock classification (FSC) code (first four digits). For example, FSN 6625-553-0142 converts to NSN 6625-00-553-0142.

c. *Description.* Indicates the Federal item name and a minimum description required to identify the item. The last line indicates the reference number followed by the applicable Federal Supply Code for Manufacturer (FSCM) in parentheses. The FSCM is used as an element in item identification to designate manufacturer or distributor or Government agency, etc., and is identified in SB 708-42.

d. *Unit of Measure (U/M).* Indicates the standard or basic quantity by which the listed item is used in performing the actual maintenance function. This measure is expressed by a two-character alphabetical abbreviation; e.g., ea, in, pr, etc., and is the basis used to indicate quantities and allowances in subsequent columns. When the unit of measure differs from the unit of issue, the lowest unit of issue that will satisfy the required units of measure will be requisitioned.

e. *Quantity Incorporated in Unit.* This column indicates the quantity of the item used in the equipment. Subsequent appearances of the same item in the same assembly are indicated by the letters "REF".

f. *30-Day DS/GS Maintenance Allowances.*

NOTE

Allowances in GS column are for GS maintenance only.

(1) The repair parts indicated by asterisk entries in separate allowance columns for DS and GS represent those authorized for use at that category of maintenance to be requisitioned on an "as required" basis, until stockage is based on demand in accordance with AR 710-2.

(2) Allowance quantities are indicated in the special tool lists section for special tools, TMDE, and other support equipment.

g. *1-year Allowance Per 100 Equipments/Contingency Planning Purposes.* Column intentionally left blank.

h. *Depot Maintenance Allowance Per 100 Equipments.* This column indicates opposite the first appearance of each item the total quantity authorized for depot maintenance of 100 equipments.

i. *Illustration.* This column is divided as follows :

(1) *Figure number.* Indicates the figure number of the illustration on which the item is shown in TM 11-5001.

(2) *Item number.* Indicates the item number or reference designation used to reference the item in the illustration.

14. Special Information

a. Usable on codes are included in column 3. Uncoded items are applicable to all models. Identification of the usable on codes used in this publication are-

cod6	Used on
B0V	CU-119/FR
B0W	CU-119A/FR

b. The following publications pertain to the equipment and its components:

TM 11-5001	Antenna Coupler CU-119A/FR.
TM 11-5820-381- 20P	Organizational Maintenance Repair Parts and Special Tools List 8: Antenna Coupler CU-119/FR and CU-119A/FR.

1-5. Location of Repair Parts

a. This manual contains one cross-reference index (sec IV) to be used to locate a repair part when either the Federal stock number or reference number (manufacturer's part number) is known. The first column in the index is prepared in numerical or alphanumeric sequence in ascending order. The reference numbers (manufacturer's part numbers) are listed immediately following the last listed Federal stock number in the index of Federal stock numbers.

b. When the Federal stock number or reference number is known, follow the procedures given in (1) and (2) below.

(1) Refer to the index of Federal stock numbers (set IV) and locate the Federal stock number or reference number. The FSN and reference number are cross-referenced to the applicable figure and item number or reference designation.

(2) Refer to the repair parts list (sec II) and locate the figure number (col 10a) and item number or reference designation (col 10b) as noted in the FSN index.

e. When the figure and item number or reference designation are known, scrutinize columns 10a and 10b of the repair parts list (sec II) until the item is located.

d. When the FSN, reference number, figure number, item number and reference designation are not known, scrutinize column 3 of the repair parts list (sec II), which is arranged in alphabetical order.

1-6. Abbreviations

Not applicable.

1-7. Reporting of Equipment Publication Improvements

The reporting of errors, omissions, and recommendations for improving this publication by the individual user is encouraged. Reports should be submitted on DA Form 2028 (Recommended Changes to Publications and Blank Forms) and forwarded direct to Commander, US Army Electronics Command, ATTN: AMSEL-MA-CT, Fort Montmouth, N. J. 07703.

(Next printed page is 6.)

SECTION II

(1) SMR CODE	(2) FEDERAL STOCK NUMBER	(3) DESCRIPTION REFERENCE NUMBER & MFR. CODE USABLE ON CODE	(4) UNIT OF MEAS	-iii- QTY INC IN UNIT	(6) 30-DAY D5 MAINT ALLOWANCE			(7) 30-DAY G6 MAINT ALLOWANCE			(8) 1-YR ALW PER 100 EQUIP (CNTGCTY)	(9) DEOPT MAINT ALW PER 100 EQUIP	(10) ILLUSTRATION (a) (b) Figure Item N o . N o .	
					(a)	(b)	(c)	(a)	(b)	(c)			N o .	Item N o .
					1-20	21-50	51-100	1-20	21-50	51-100				
XDFZZ		BUTTON, PLUG H1..... 80W 48187 1907631	EA	1	*	*	*	*	*	*			H 1	
XDFZZ		CAPACITOR FIXED, MICA DIELECTRIC C40.... 68J MMF PORM10PCT, 500 VDC W	EA	13	*	*	*	*	*	*			1 0 C 4 0	
XDFZZ		CM30C681K 1813491 CAPACITOR, FIXED* MICA DIELECTRIC C41....	EA	REF	*	*	*	*	*	*			1 0 C 4 1	
XDFZZ		680 MMF PORN10PCT, 500 VDC W CM30C881K 181349; CAPACITOR, FIXED, MICA DIELECTRIC C42....	EA	REF	*	*	*	*	*	*			1 0 C 4 2	
XDFZZ		680 MMF PORM10PCT, 500 VDC W CM30C681K 181349) CAPACITOR, FIXED MICA DIELECTRIC C43....	EA	REF	*	*	*	*	*	*			1 0 C 4 3	
XDFZZ		680 MMF PORN10PCT, 500 VDC W CM30C681K (81349)	EA	REF	*	*	*	*	*	*			1 0 C 4 4	
XDFZZ		CAPACITOR, FIXED MICA DIELECTRIC C44.... 680 MMW PORN10PCT, 500 VDC W CM30C681K (81349)	EA	REF	*	*	*	*	*	*			1 0 C 4 5	
XDFZZ		CAPACITOR FIXED MICA DIELECTRIC C45.... 680 MMF PORN10PCT, 500 VDC W CM30C681K (81349)	EA	REF	*	*	*	*	*	*			1 0 C 4 6	
XDFZZ		CAPACITOR, FIXED MICA DIELECTRIC C46.... 680 MMF PORN10PCT, 500 VDC W CM30C081K (81349)	EA	REF	*	*	*	*	*	*			1 0 C 4 7	
XDFZZ		CAPACITOR, FIXED, MICA DIELECTRIC C47.... 680 MMF PORN10PCT, 500 VDC W CM30C081K (81349)	EA	REF	*	*	*	*	*	*			1 0 C 4 8	
XDFZZ		CAPACITORS FIXED MICA DIELECTRIC C48.... 68J MMF PORN10PCT, 500 VDC W CH30C681K (81349)	EA	REF	*	*	*	*	*	*			1 0 C 4 9	
XDFZZ		CAPACITOR, FIXED, MICA DIELECTRIC C49.... 680 MMF PORN10PCT 500 VDC W CM30C681K (81349)	EA	REF	*	*	*	*	*	*			1 0 C 5 0	
XDFZZ		CAPACITOR, FIXED MICA DIELECTRIC C50.... 680 MMF PORN10PCT, 500 VDC W CM30C681K (81349)	EA	REF	*	*	*	*	*	*			1 0 C 5 1	
XDFZZ		CAPACITOR, FIXED MICA DIELECTRIC C51.... 680 MMF PORN10PCT, 500 VDC W CM30C681K (81349)	EA	REF	*	*	*	*	*	*			1 0 C 5 2	
XDFZZ		CAPACITOR, FIXED, MICA DIELECTRIC C52.... 680 MMF PORN10PCT, 500 VDC W CM30C681K (81349)	EA	REF	*	*	*	*	*	*			1 0 C 4 0	
XDFZZ		CAPACITOR, FIXED, CERAMIC DIELECTRIC C40. 680 MMF PORH20PCT 350 VDCW CPTK680 (72982)	EA	13	*	*	*	*	*	*			1 0 C 4 1	
XDFZZ		CAPACITOR, FIXED CERAMIC DIELECTRIC C41. 680 MMF PORMZOPCT, 350 VDCW CPZK680 (72982)	EA	REF	*	*	*	*	*	*			1 0 C 4 2	
XDFZZ		CAPACITOR, FIXED CERAMIC DIELECTRIC C42. 680 MMF PORN20PCT 350 VDCW CP2K680 (72982)	EA	REF	*	*	*	*	*	*			1 0 C 4 3	
XDFZZ		CAPACITOR, FIXED, CERAMIC DIELECTRIC C43. 680 MMF PORM20PCT, 350 VDCW CP2K680 (72982)	EA	REF	*	*	*	*	*	*			1 0 C 4 3	

SECTION II

(1) SMR CODE	(2) FEDERAL STOCK NUMBER	(3) DESCRIPTION REFERENCE NUMBER & MFR. CODE USABLE ON CODE	(4) UNIT OF MEAS	(5) QTY INC IN UNIT	(6) 30-DAY DS MAINT ALLOWANCE			(7) 30-DAY GS MAINT ALLOWANCE			(8) 1-YR ALY PER 100 EQUIP CNTGCTCY	(9) DEPOT MAINT ALY PER 100 EQUIP	(10) ILLUSTRATION	
					(a)	(b)	(c)	(a)	(b)	(c)			(a)	(b)
					1-20	21-50	51-100	1-20	21-50	51-100			FIGUR NO.	ITEM NO.
XDFZZ		CAPACITOR FIXED, CERAMIC DIELECTRIC C44 600 MMF PORM120PCT, 350 VDCW CPZK080 (72982) 80W	EA	REF	*	1	*	*	*	*			10	C44
XDFZZ		CAPACITOR • FIXED CERAMIC DIELECTRIC C45 68J MMF PORM20PCT, 350 VDCW CP2K680 (72982) 80W	EA	REF	*	1	*	*	*	*			AC	C45
XDFZZ		CAPACITOR, FIXED, CERAMIC DIELECTRIC C46 68J MMF PORM20PCT, 350 VDCW CP2K68U (72982) 80W	EA	REF	*	1	*	*	*	*			10	C46
XDFZZ		CAPACITOR, FIXED CERAMIC DIELECTRIC C47 680 MMF PORM20PCT, 350 VDCW CPZK680 (72982) 80W	EA	REF	*	1	*	*	*	*			10	C47
XDFZZ		CAPACITOR FIXED CERAMIC DIELECTRIC C48, 680 MMF PORM20PCT, 350 VDCY CPZK680 (72982) 80W	EA	REF	*	1	*	*	*	*			10	C48
XDFZZ		CAPACITOR FIXED, CERAMIC DIELECTRIC C49 680 MMF PORM20PCT 350 VDCW CP2K680 (72982) 80W	EA	REF	*	1	*	*	*	*			AC	C49
XDFZZ		CAPACITOR FIXED CERAMIC DIELECTRIC C50 680 MMF PORM20PCT, 350 VDCW CP2K680 (72982) 80W	EA	REF	*	1	*	*	*	*			10	C50
XDFZZ		CAPACITOR FIXED CERAMIC DIELECTRIC C51, 680 MMF PORM20PCT 350 VDCY CP2K680 (72982) 80W	EA	REF	*	1	*	*	*	*			10	C51
XDFZZ		CAPACITOR FIXED CERAMIC DIELECTRIC C52, 680 MMF PORM20PCT 350 VDCW CP2K080 (72982) 80W	EA	REF	*	1	*	*	*	*			10	C52
PAFZZ	5910-101-3856	CAPACITOR, FIXED, MICA DIELECTRIC CL...., 3900 MMF PORM10PCT 500 VDCY CM358392K (81349)	EA	39	*	*	*	*	*	*		3	10	C 1
PAFZZ	5910-101-3856	CAPACITOR FIXED, MICA DIELECTRIC CZ...., 3900 MMF PORM10PCT 500 VDCY CM358392K (81349)	EA	REF	*	*	*	*	*	*		3	10	C 2
PAFZZ	5910-101-3856	CAPACITOR, FIXED MICA DIELECTRIC C3...., 3900 MMF PORM10PCT. 500 VDCY CM358392K (81349)	EA	REF	*	*	*	*	*	*		3	10	C 3
PAFZZ	5910-101-3856	CAPACITOR FIXED MICA DIELECTAIC C4...., 3900 MMF PORM10PCT, 500 VDCW CM358392K (81349)	EA	REF	*	*	*	*	*	*		3	10	C 4
PAFZZ	5910-101-3856	CAPACITOR FIXED MICA DIELECTRIC C5...., 3930 MMF PORM10PCT, 500 VDCY CM358392K (81349)	EA	REF	*	*	*	*	*	*		3	10	C 5
PAFZZ	5910-101-3856	CAPACITOR, FIXED MICA DIELECTRIC C6...., 3900 MMF PORM10PCT, 500 VDCW CM358392K (81349)	EA	REF	*	*	*	*	*	*		3	10	C 6
PAFZZ	5910-101-3856	CAPACITOR FIXED MICA DIELECTRIC C7...., 3900 MMF PORM10PCT 500 VDCW CM358392K (81349)	EA	REF	*	*	*	*	*	*		3	10	C 7
PAFZZ	5910-101-3856	CAPACITOR FIXED MICA DIELECTRIC C8...., 3900 MMF PORM10PCT. 500 VDCW CM358392K (81349)	EA	REF	*	*	*	*	*	*		3	10	C 8
PAFZZ	5910-101-3856	CAPACITOR FIXED MICA DIELECTRIC CO.... CONTINUED	EA	REF	*	*	*	*	*	*		3	10	C 9

(1) SMR CODE	(2) FEDERAL STOCK NUMBER	(3) DESCRIPTION REFERENCE NUMBER & MFR. CODE USABLE ON CODE		(4) UNIT OF MEAS	(5) QTY INC IN UNIT	(6) 30-DAY DS MAINT ALLOWANCE			(7) 30-DAY GS MAINT ALLOWANCE			(8) 1-YR ALW PER 100 EQUIP CNTGCT	(9) DEPOT MAINT ALW PER 100 EQUIP	(10) ILLUSTRATION		
						(a)	(b)	(c)	(a)	(b)	(c)			(a)	(b)	
						1-20	21-50	51-100	1-20	21-50	51-100			FIGURE NO.	ITEM NO.	
		CONTINUED														
PAFZZ	5910-101-3856	3900 MMF PORM10PCT, 500 VDCY CM35839LK (81349)	C10....	EA	REF	*	*	*	*	*	*		3	10	C10	
PAFZZ	5910-101-3856	CAPACITOR, FIXED MICA DIELECTRIC 3900 MMF PORM10PCT 500 VDCW CM358392K (81349)	C11....	EA	REF	*	*	*	*	*	*		3	10	C11	
PAFZZ	5910-101-3856	CAPACITOR, FIXED MICA DIELECTRIC 3900 MMF PORM10PCT 500 VDCW CM358392K (81349)	C12....	EA	REF	*	*	*	*	*	*		3	10	C12	
PAFZZ	5910-101-3856	CAPACITOR, FIXED MICA DIELECTRIC 3900 MMF PORM10PCT 500 VDCW CM358392K (81349)	C13....	EA	REF	*	*	*	*	*	*		3	10	C13	
PAFZZ	5910-101-3856	CAPACITOR, FIXED MICA DIELECTRIC 3900 MMF PORM10PCT, 500 VDCW CM5B392K (81349)	C14....	EA	REF	*	*	*	*	*	*		3	10	C14	
PAFZZ	5910-101-3856	CAPACITOR, FIXED MICA DIELECTRIC 3900 MMF PORM10PCT, 500 VDCW CM35B392K (81349)	C15....	EA	REF	*	*	*	*	*	*		3	10	C15	
PAFZZ	5910-101-3856	CAPACITOR, FIXED MICA DIELECTRIC 3900 MMF PORM10PCT, 500 VDCW CM35B392K (81349)	C16....	EA	REF	*	*	*	*	*	*		3	10	CA6	
PAFZZ	5910-101-3856	CAPACITOR, FIXED MICA DIELECTRIC 3900 MMF PORM10PCT, 500 VDCW CM35B392K (81349)	C17....	EA	REF	*	*	*	*	*	*		3	10	C17	
PAFZZ	5910-101-3856	CAPACITOR, FIXED MICA DIELECTRIC 3900 MMF PORM10PCT, 500 VDCW CM35B392K (81349)	C18....	EA	REF	*	*	*	*	*	*		3	10	C18	
PAFZZ	5910-101-3856	CAPACITOR, FIXED MICA DIELECTRIC 3900 MMF PORM10PCT, 500 VDCW CM35B392K (81349)	C19....	EA	REF	*	*	*	*	*	*		3	10	C19	
PAFZZ	5910-101-3856	CAPACITOR, FIXED MICA DIELECTRIC 3900 MMF PORM10PCT, 500 VDCW CM35B392K (81349)	C20....	EA	REF	*	*	*	*	*	*		3	10	C20	
PAFZZ	5910-101-3856	CAPACITOR, FIXED MICA DIELECTRIC 3900 MMF PORM10PCT, 500 VDCW CM35B392K (81349)	C21....	EA	REF	*	*	*	*	*	*		3	A11	C21	
PAFZZ	5910-101-3856	CAPACITOR, FIXED MICA DIELECTRIC 3900 MMF PORM10PCT, 500 VDCW CM35B392K (81349)	C22....	EA	REF	*	*	*	*	*	*		3	A10	C22	
PAFZZ	5910-101-3856	CAPACITOR, FIXED MICA DIELECTRIC 3900 MMF PORM10PCT, 500 VDCW CM35B392K (81349)	C23....	EA	REF	*	*	*	*	*	*		3	A10	C23	
PAFZZ	5910-101-3856	CAPACITOR, FIXED MICA DIELECTRIC 3900 MMF PORM10PCT, 500 VDCW CM35D392K (81349)	C24....	EA	REF	*	*	*	*	*	*		3	10	C24	
PAFZZ	5910-101-3856	CAPACITOR, FIXED MICA DIELECTRIC 3900 MMF PORM10PCT, 500 VDCW CM35B392K (81349)	C25....	EA	REF	*	*	*	*	*	*		3	10	C25	
PAFZZ	5910-101-3856	CAPACITOR, FIXED MICA DIELECTRIC 3900 MMF PORM10PCT, 500 VDCW CM35B392K (81349)	C26....	EA	REF	*	*	*	*	*	*		3	10	C 2 6	
		CONTINUED														

SECT II

(1) SMR CODE	FEDERAL STOCK NUMBER	(3) DESCRIPTION REFERENCE NUMBER & MFR. CODE USABLE ON CODE	(4) UNIT OF MEAS	(5) QTY INC IN UNIT	(6) 30-DAY DS MAINT ALLOWANCE			(7) 30-DAY GS MAINT ALLOWANCE			(8) 1-YR ALW PER 100 EQUIP CNTGCY	(9) DEPOT MAINT ALW PER 100 EQUIP	(10) ILLUSTRATION	
					(a)	(b)	(c)	(a)	(b)	(c)			(a)	(b)
					1-20	21-50	51-100	1-20	21-50	51-100			FIGURE NO.	ITEM NO.
		CONTINUED												
PAFZZ	5910-101-3856	3900 MMF PORM10PCT, 500 VDCW CM35B392K (81349) CAPACITOR, FIXED, MICA DIELECTRIC C27....	EA	REF	*	*	*	*	*	*	3	10	C27	
PAFZZ	5910-101-3856	3900 MMF PORM10PCT, 500 VDCW CM5B392K (81349) CAPACITOR, FIXED, MICA DIELECTRIC C28....	EA	REF	*	*	*	*	*	*	3	10	C28	
PAFZZ	5910-101-3856	3900 MMF PORM10PCT, 500 VDCW CM35B392K (81349) CAPACITOR, FIXED, MICA DIELECTRIC C29...	EA	REF	*	*	*	*	*	*	3	10	C29	
PAFZZ	5910-101-3856	3900 MMF PORM10PCT, 500 VDCW CM35B392K (81349) CAPACITOR, FIXED, MICA DIELECTRIC C30...	EA	REF	*	*	*	*	*	*	3	10	C30	
PAFZZ	5910-101-3856	3900 MMF PORM10PCT, 500 VDCW CM35B392K (81349) CAPACITOR, FIXED, MICA DIELECTRIC C31...	EA	REF	*	*	*	*	*	*	3	10	C31	
PAFZZ	5910-101-3856	3900 MMF PORM10PCT, 500 VDCW CM35B392K (81349) CAPACITOR, FIXED, MICA DIELECTRIC C32....	EA	REF	*	*	*	*	*	*	3		C32	
PAFZZ	5910-101-3856	3900 MMF PORM10PCT, 500 VDCW CM35B392K (81349) CAPACITOR, FIXED, MICA DIELECTRIC C33....	EA	REF	*	*	*	*	*	*	3	10	C33	
PAFZZ	5910-101-3850	3900 MMF PORM10PCT, 500 VDCW CM35B392K (81349) CAPACITOR, FIXED, MICA DIELECTRIC C34....	EA	REF	*	*	*	*	*	*	3	10	C34	
PAFZZ	5910-101-3856	3900 MMF PORM10PCT, 500 VDCW CM35B392K (81349) CAPACITOR, FIXED, MICA DIELECTRIC C35....	EA	REF	*	*	*	*	*	*	3	10	C35	
PAFZZ	5910-101-3856	3900 MMF PORM10PCT, 500 VDCW CM35B392K (81349) CAPACITOR, FIXED, MICA DIELECTRIC C36....	EA	REF	*	*	*	*	*	*	3	10	C36	
PAFZZ	5910-101-3856	3900 MMF PORM10PCT, 500 VDCW CM35B392K (81349) CAPACITOR, FIXED, MICA DIELECTRIC C37....	EA	REF	*	*	*	*	*	*	3	10	C37	
PAFZZ	5910-101-3856	3900 MMF PORM10PCT, 500 VDCW CM35B392K (81349) CAPACITOR, FIXED, MICA DIELECTRIC C38....	EA	REF	*	*	*	*	*	*	3	10	C38	
PAFZZ	5910-101-3856	3900 MMF PORM10PCT, 500 VDCW CM35B392K (81349) CAPACITOR, FIXED, MICA DIELECTRIC C39....	EA	REF	*	*	*	*	*	*	3	10	C39	
XDFZZ		COIL, RADIO FREQUENCY L3 INCL 270 OHM... RESISTOR USED AN A MODEL ON EQUIP PROC ON ORDER NO. 21719-PH-56, ORDER 56102-PH- 57)	EA	1	*	*	*	*	*	*		10	L3	
XDFZZ		SCB52982-1 (80063) BOW COIL, RADIO FREQUENCY L3 INCL 270 OHM... RESISTOR (NOT) USED ON EQUIP PROC ON ORDER NO 21719-PH-56 OR ORDER 56102-PH-57)	EA	1	*	*	*	*	*	*		10	L3	
XDFZZ		C6 (58474) BOW COIL, RADIO FREQUENCY L4 INCL L30 OHM... CONTINUED	EA	2	*	*	*	*	*	*		10	L4	

SECTION II

SMR CODE	FEDERAL STOCK NUMBER	(3) DESCRIPTION REFERENCE NUMBER & MFR. CODE USABLE ON CODE	(4) UNIT OF MEAS	(5) QTY INC IN UNIT	(6) 30-DAY DS MAINT ALLOWANCE			(7) 30-DAY GS MAINT ALLOWANCE			(8) 1-YR ALW PER 100 EQUIP CNTGCTY	(9) DEPOT MAINT ALW PER 100 EQUIP	(10) ILLUSTRATION	
					(a)	(b)	(c)	(a)	(b)	(c)			Text	(b)
					1-20	21-50	51-100	1-20	21-50	51-100			Text	ITEM NO.
		CONTINUED RESISTOR (USED AN A MODEL ON EQUIP PROC ON ORDER NO. 21719-PH-56 OR ORDER NO. 56102-PH-57) SCB52982-2 (80063)	EA	REF	*	*	*	*	*	*				L5
		COIL, RADIO FREQUENCY L5 INCL 130 OHM... RESISTOR (USED AN A MODEL ON EQUIP PROC ON ORDER NO. 21719-PH-56 OR ORDER NO. 56102-PH-57) SCB52982-2 (80063)	EA	2	*	*	*	*	*	*				L4
		COIL, RADIO FREQUENCY L4 INCL A30 OHM... RESISTOR (NOT USED ON EQUIP PROC ON ORDER NO. 21719-PH-56, OR ORDER NO. 56102-PH-57) C5 (58474) ^{BOW}	EA	REF	*	*	*	*	*	*		10		L5
	5935-199-7022	COIL, RADIO FREQUENCY L5 INCL 130 OHM... RESISTOR (NOT USED ON EQUIP PROC ON ORDER NO. 21719-PH-56, OR ORDER NO. 56102-PH-57) C5 (58474) ^{BOW}	EA	11	*	*	*	*	*	*		3		
		CONNECTOR, PLUG, ELECTRICAL NO-REF-DESIG. 1 HALE, COAX, PLAIN CONT 358A (95976)	EA	13	*	*	*	*	*	*			10	V1
		ELECTRON TUBE 6AC7W (81349) Vi.....	EA	REF	*	*	*	*	*	*			10	V2
		ELECTRON TUBE 6AC7W (81349) V2.....	EA	REF	*	*	*	*	*	*			10	V3
		ELECTRON TUBE 6AC7W (81349) V3.....	EA	REF	*	*	*	*	*	*			10	V4
		ELECTRON TUBE 6AC7W (81349) V4.....	EA	REF	*	*	*	*	*	*			10	V5
		ELECTRON TUBE 6AC7W (81349) V5.....	EA	REF	*	*	*	*	*	*			10	V6
		ELECTRON TUBE 6AC7W (81349) V6.....	EA	REF	*	*	*	*	*	*			10	V7
		ELECTRON TUBE 6AC7W (81349) V7.....	EA	REF	*	*	*	*	*	*			10	V8
		ELECTRON TUBE 6ACYW (81349) V8.....	EA	REF	*	*	*	*	*	*			10	V9
		ELECTRON TUBE 6AC7W (81349) V9.....	EA	REF	*	*	*	*	*	*			10	V10
		ELECTRON TUBE 6AC7W (81349) V10.....	EA	REF	*	*	*	*	*	*			10	V11
		ELECTRON TUBE 6AC7W (81349) V11.....	EA	REF	*	*	*	*	*	*			10	V12
		ELECTRON TUBE 6AC7W (81349) V12.....	EA	REF	*	*	*	*	*	*			10	V13
		ELECTRON TUBE 6AC7W (81349) V13.....	EA	REF	*	*	*	*	*	*			10	V13
	5970-557-2350	INSULATOR, PLATE E6..... 37202 (76487) ^{BOW}	EA	2	*	*	*	*	*	*		2		E6
	5970-557-2350	INSULATOR, PLATE E7..... 37202 (76487) ^{BOW}	EA	REF	*	*	*	*	*	*		2		E7
	5935-404-7981	JACK ASSEMBLY J1 1 RD SPLIT FEMALE CONT. SCB52969 (80063)	EA	11	*	*	*	*	*	*		2		J1

SECTION II

(1) SMR CODE	(2) FEDERAL STOCK NUMBER	(3) DESCRIPTION REFERENCE NUMBER & MFR. CODE USABLE ON CODE	(4) JNIT OF IEAS	(5) QTY INC IN UNIT	(6) 30-DAY DS MAINT ALLOWANCE			(7) 30-DAY GS MAINT ALLOWANCE			(8) 1-YR ALW PER 100 EQUIP CNTGCT	(9) DEPOT MAINT ALW PER 100 EQUIP	(10) ILLUSTRATION	
					(a)	(b)	(c)	(a)	(b)	(c)			(a)	(b)
					1-20	21-50	51-100	1-20	21-50	51-100			FIGURE NO.	ITEM NO.
PAFZZ	5935-404-7981	JACK ASSEMBLY J2 1 RD SPLIT FEMALE CONT. SCB52969 (80063)	EA	REF	*	*	*	*	*	*		2	10	J2
PAFZZ	5935-404-7981	JACK ASSEMBLY J3 1 RD SPLIT FEMALE CONT. SCB52969 (80063)	EA	REF	*	*	*	*	*	*		2	10	J3
PAFZZ	5935-404-7981	JACK ASSEMBLY J4 1 RD SPLIT FEMALE CONT. SCB52969 (80063)	EA	REF	*	*	*	*	*	*		2	10	J4
PAFZZ	5935-404-7981	JACK ASSEMBLY J5 1 RD SPLIT FEMALE CONT. SCB52969 (80063)	EA	REF	*	*	*	*	*	*		2	10	J5
PAFZZ	5935-404-7981	JACK ASSEMBLY J6 A RD SPLIT FEMALE CONT. SCB52969 (80063)	EA	REF	*	*	*	*	*	*		2	10	J6
PAFZZ	5935-404-7981	JACK ASSEMBLY J7 1 RD SPLIT FEMALE CONT. SCB52969 (80063)	EA	REF	*	*	*	*	*	*		2	10	J7
PAFZZ	5935-404-7981	JACK ASSEMBLY J8 1 RD SPLIT FEMALE CONT. SCB52969 (80063)	EA	REF	*	*	*	*	*	*		2	10	J8
PAFZZ	5935-404-7981	JACK ASSEMBLY J9 1 RD SPLIT FEMALE CONT. SCB52969 (80063)	EA	REF	*	*	*	*	*	*		2	10	J9
PAFZZ	5935-404-7981	JACK ASSEMBLY J10 A RD SPLIT FEMALE CONT SCB52969 (80063)	EA	REF	*	*	*	*	*	*		2	10	J10
PAFZZ	5935-404-7981	JACK ASSEMBLY J11 1 RD SPLIT FEMALE CONT SCB52969 (80063)	EA	REF	*	*	*	*	*	*		2	10	J11
PAFZZ	5935-192-4858	JACK TELEPHONE J12..... JJO92 (81349) BOW	EA	1	*	*	*	*	*	*		2		J12
PAFZZ	5935-539-5934	JACK TELRPHONE J12 NO. 8-32 IN THD MTG STUD FUSED IN A MODEL ON EQUIP PROC ON ORDER NO. 21719-PH-56 AND ORDER NO. 56102- PH-57) BOW	EA	1	*	*	*	*	*	*		2	3	J12
XDFZZ		JJO99 (81349) BOW KNOB E9..... BOW	EA	1	*	*	*	*	*	*				E9
PAFZZ	5355-160-5964	S308-64-40281 (75376) BOW KNOB E9 (USED Ok A MODEL ON EQUIP PROC ON ORDER NO. 21719-PH-56 AND ORDER NO. 56102-PH-57) BOW	EA	1	*	*	*	*	*	*		3		E9
PAFZZ	5355-160-5881	S308-64BB40269 (75376) BOW KNOB E9..... BOW	EA	1	*	*	*	*	*	*		3		E9
PACZZ	6240-155-8706	S309-64-40269 (75376) BOV LAMP, INCANDESCENT E1 6-BV, MIN BAY BASE MS15571-2 (96906)	EA	1	*	*	*	*	*	*		20	10	E1
PAQZZ	6210-270-4115	LENS, INDICATOR LIGHT NO-REF-DESIG RED.. 25 (20902)	EA	1	*	*	*	*	*	*		5		
PAFZZ	6210-186-8017	LIGHT, INDICATOR 11 W/LENS..... 50 (20902)	EA	1	*	*	*	*	*	*		5		11
XDFZZ		POST, BINDING E4 NO. 6-32 THD MTG STUD.. 938A (06840)	EA	2	*	*	*	*	*	*			10	E4
XDFZZ		POST, BINDING E5 NO. 6-32 THD MTG STUD.. 938A (06840)	EA	REF	*	*	*	*	*	*			10	E5
PAFZZ	5905-m-9344	RESISTOR, FIXED, COMPOSITION R43 100 OHM PORM10PCT, 1/2 W RC20GF101K (81349)	EA	13	*	*	*	*	*	*		3	10	R43
PAFZZ	5905-106-9344	RESISTOR, FIXED, COMPOSITION R44 100 OHM PORM10PCT, 1/2 W RC20GF101K (81349)	EA	REF	*	*	*	*	*	*		3	10	R44
PAFZZ	5905-106-9344	RESISTOR, FIXED, COMPOSITION R45 100 OHM PORM10PCT, 1/2 W RC20GF101K (81349)	EA	REF	*	*	*	*	*	*		3	10	R45

SECTION II

(1) SMR CODE	(2) FEDERAL STOCK NUMBER	(3) DESCRIPTION REFERENCE NUMBER & MFR. CODE USABLE ON CODE		(4) UNIT OF MEAS	(5) QTY INC IN UNIT	(6) 30-DAY DS MAINT ALLOWANCE			(7) 30-DAY GS MAINT ALLOWANCE			(8) 1-YR ALW PER 100 EQUIP CNTGCT	(9) DEPOT MAINT ALW PER 100 EQUIP	(10) ILLUSTRATION			
						(a) 1-20	(b) 21-50	(c) 51-100	(a) 1-20	(b) 21-50	(c) 51-100			(A) FIGURE NO.	(B) ITEM NO.		
		CONTINUED															
PAFZZ	5905-106-9344	PORM10PCT, 1/2 W RC2OGF101K (81349)	RESISTOR, FIXED, COMPOSITION R46	AGO	OHM	EA	REF	*	*	*	*	*	*	3	1	0	R46
PAFZZ	5905-106-9344	PORM10PCT, 1/2 W RC2OGF101K (81349)	RESISTOR, FIXED, COMPOSITION R47	100	OHM	EA	REF	*	*	*	*	*	*	3	1	0	R47
PAFZZ	5905-106-9344	PORM10PCT, 1/2 W RC2OGF101K (81349)	RESISTOR, FIXED, COMPOSITION R48	100	OHM	EA	REF	*	*	*	*	*	*	3	1	0	R48
PAFZZ	5905-106-9344	PORM10PCT, 1/2 W RC2OGF101K (81349)	RESISTOR, FIXED, COMPOSITION R49	100	OMH	EA	REF	*	*	*	*	*	*	3	1	0	R49
PAFZZ	5905-106-9344	PORM10PCT, 1/2 W RC2OGF101K (81349)	RESISTOR, FIXED, COMPOSITION R50	100	OHM	EA	REF	*	*	*	*	*	*	3	1	0	R50
PAFZZ	5905-106-9344	PORM10PCT, 1/2 W RC2OGF101K (81349)	RESISTOR, FIXED, COMPOSITION R51	100	OHM	EA	REF	*	*	*	*	*	*	3	1	0	R51
PAFZZ	5905-106-9344	PORM10PCT, 1/2 W RC2OGF101K (81349)	RESISTOR, FIXED, COMPOSITION R52	100	OHM	EA	REF	*	*	*	*	*	*	3	1	0	R52
PAFZZ	5905-106-9344	PORM10PCT, 1/2 W RC2OGF101K (81349)	RESISTOR, FIXED, COMPOSITION R53	100	OHM	EA	REF	*	*	*	*	*	*	3	1	0	R53
PAFZZ	5905-106-9344	PORM10PCT, 1/2 W RC2OGF101K (81349)	RESISTOR, FIXED, COMPOSITION R54	100	OHM	EA	REF	*	*	*	*	*	*	3	1	0	R54
PAFZZ	5905-106-9344	PORM10PCT, 1/2 W RC2OGF101K (81349)	RESISTOR, FIXED, COMPOSITION R55	100	OHM	EA	REF	*	*	*	*	*	*	3	1	0	R55
PAFZZ	5905-252-5434	PORM10PCT, 1/2 W RC2OGF101K (81349)	RESISTOR, FIXED, COMPOSITION R16	120	OHM	EA	REF	*	*	*	*	*	*	3	1	0	R16
PAFZZ	5905-252-5434	PORM5PCT, 1/2 W RC2OGF121J (81349)	RESISTOR, FIXED, COMPOSITION R17	A20	OHM	EA	REF	*	*	*	*	*	*	3	1	0	R17
PAFZZ	5905-252-5434	PORM5PCT, 1/2 W RC2OGF121J (81349)	RESISTOR, FIXED, COMPOSITION R18	120	OHM	EA	REF	*	*	*	*	*	*	3	1	0	R18
PAFZZ	5905-252-5434	PORM5PCT, 1/2 W RC2OGF121J (81349)	RESISTOR, FIXED, COMPOSITION R19	A20	OHM	EA	REF	*	*	*	*	*	*	3	10		R19
PAFZZ	5935-252-5434	PORM5PCT, 1/2 W RC2OGF121J (81349)	RESISTOR, FIXED, COMPOSITION R20	120	OHM	EA	REF	*	*	*	*	*	*	3	1	0	R20
PAFZZ	5905-252-5434	PORM5PCT, 1/2 W RC2OGF121J (81349)	RESISTOR, FIXED, COMPOSITION R21	120	OHM	EA	REF	*	*	*	*	*	*	3	1	0	R21
PAFZZ	5905-252-5434	PORM5PCT, 1/2 W RC2OGF121J (81349)	RESISTOR, FIXED, COMPOSITION R22	120	OHM	EA	REF	*	*	*	*	*	*	3	1	0	R22
		CONTINUED															

SECTION II

(1) SMR CODE	(2) FEDERAL STOCK NUMBER.	DESCRIPTION REFERENCE NUMBER MFR. CODE USABLE ON CODE	(4) UNIT OF EAS	(5) QTY INC IN UNIT	(6) 30-DAY DS MAINT ALLOWANCE			(7) 30-DAY GS MAINT ALLOWANCE			(8) 1-YR ALW PER 100 EQUIP CNTGCT	(9) DEPOT MAINT ALW PER 100 EQUIP	(10) ILLUSTRATION	
					(a)	(b)	(c)	(a)	(b)	(c)			(a)	(b)
					1-20	21-50	51-100	1-20	21-50	51-100			FIGURE NO.	ITEM NO.
		CONTINUED												
PAFZZ	5905-252-5434	PORM5PCT 1/2W RC2OGF121J (81349) RESISTOR, FIXED, COMPOSITION R23 A20 OHM	EA	REF	*	*	*	*	*	*	3	10	R23	
PAFZZ	5905-252-5434	PORM5PCT, 1/2W RC2OGF121J (81349) RESISTOR, FIXED, COMPOSITION R24 A20 OHM	EA	REF	*	*	*	*	*	*	3	10	R24	
PAFZZ	5905-252-5434	PORM5PCT, 1/2W RC2OGF121J (81349) RESISTOR, FIXED, COMPOSITION R25 120 OHM	EA	REF	*	*	*	*	*	*	3	10		
PAFZZ	5905-252-5434	PORM5PCT, 1/2W RC2OGF121J (81349) RESISTOR, FIXED, COMPOSITION R26 120 OHM	EA	REF	*	*	*	*	*	*	3	10	R26	
PAFZZ	5905-252-5434	PORM5PCT, 1/2W RC2OGF121J (81349) RESISTOR, FIXED, COMPOSITION R27 120 OHM	EA	REF	*	*	*	*	*	*	3	10	R27	
PAFZZ	5905-252-5434	PORM5PCT, 1/2W RC2OGF121J (81349) RESISTOR, FIXED, COMPOSITION R28 A23 OHM	EA	REF	*	*	*	*	*	*	3	10	R28	
XDFZZ		PORM5PCT, 1/2W RC2OGF121J (81349) RESISTOR, FAXED, COMPOSITION R4 100 OHM	EA	12	*	*	*	*	*	*		10	R4	
XDFZZ		PORM10PCT, 1/2W RC2OGF102K (81349) RESISTOR, FIXED, COMPOSITION R5 100 OHM	EA	REF	*	*	*	*	*	*		10	R5	
XDFZZ		PORM10PCT, 1/2W RC2OGF102K (81349) RESISTOR, FIXED, COMPOSITION R6 100 OHM	EA	REF	*	*	*	*	*	*		10		
XDFZZ		PORM10PCT, 1/2W RC2OGF102K (81349) RESISTOR, FIXED, COMPOSITION R7 100 OHM	EA	REF	*	*	*	*	*	*			R7	
XDFZZ		PORM10PCT, 1/2W RC2OGF102K (81349) RESISTOR, FIXED, COMPOSITION R8 100 OHM	EA	REF	*	*	*	*	*	*		10	R8	
XDFZZ		PORM10PCT, 1/2W RC2OGF102K (81349) RESISTOR, FIXED, COMPOSITION R9 100 OHM	EA	REF	*	*	*	*	*	*			R9	
XDFZZ		PORM10PCT, 1/2W RC2OGF102K (81349) RESISTOR, FIXED, COMPOSITION R10 100 OHM	EA	REF	*	*	*	*	*	*			R10	
XDFZZ		PORM10PCT, 1/2W RC2OGF102K (81349) RESISTOR, FIXED, COMPOSITION R11 100 OHM	EA	REF	*	*	*	*	*	*			R11	
XDFZZ		PORM10PCT, 1/2W RC2OGF102K (81349) RESISTOR, FIXED, COMPOSITION R12 100 OHM	EA	REF	*	*	*	*	*	*			R12	
XDFZZ		PORM10PCT, 1/2W RC2OGF102K (81349) RESISTOR, FIXED, COMPOSITION R13 100 OHM	EA	REF	*	*	*	*	*	*			R13	
XDFZZ		PORM10PCT, 1/2W RC2OGF102K (81349) RESISTOR, FIXED, COMPOSITION R14 100 OHM	EA	REF	*	*	*	*	*	*			R14	
		CONTINUED												

(1) SMR CODE	FEDERAL STOCK NUMBER	DESCRIPTION REFERENCE NUMBER & MFR. CODE USABLE ON CODE	(4) INIT OF IEAS	(5) QTY INC IN UNIT	(6) 30-DAY D5 MAINT ALLOWANCE			(7) 30-DAY G5 MAINT ALLOWANCE			(8) 1-YR ALW PER 100 EQUIP CNTGCT	(9) DEPOT MAINT ALW PER 100 EQUIP	(10) ILLUSTRATION	
					(a) 1-20	(b) 21-50	(c) 51-100	(a) 1-20	(b) 21-50	(c) 51-100			(a) FIGURE NO.	(b) ITEM NO.
		CONTINUED												
PAFZZ		PORM10PCT, 1/2W RC20GF102K (81349) RESISTOR, FIXED, COMPOSITION R15 100 OHM	EA	REF	*	*	*	*	*	*			1 0	R15
PAFZZ	5905-195-5514	PORM10PCT, 1/2W RC20GF102K (81349) RESISTOR, FIXED, COMPOSITION R30 1500	EA	13	*	*	*	*	*	*		3	1 0	R30
PAFZZ	5905-195-5514	OHM PORM10PCT, 1/2W RC20GF152K (81349) RESISTOR, FIXED, COMPOSITION R31 1500	EA	REF	*	*	*	*	*	*		3	1 0	R31
PAFZZ	5905-195-5514	OHM PORM10PCT, 1/2W RC20GF152K (81349) RESISTOR, FIXED, COMPOSITION R32 1500	EA	REF	*	*	*	*	*	*		3	1 0	R32
PAFZZ	5905-195-5514	OHM PORM10PCT, 1/2W RC20GF152K (81349) RESISTOR, FIXED, COMPOSITION R33 1500	EA	REF	*	*	*	*	*	*		3	1 0	R33
PAFZZ	5905-195-5514	OHM PORM10PCT, 1/2W RC20GF152K (81349) RESISTOR, FIXED, COMPOSITION R34 1500	EA	REF	*	*	*	*	*	*		3	1 0	R34
PAFZZ	5905-195-5514	OHM PORM10PCT, 1/2W RC20GF152K (81349) RESISTOR, FIXED, COMPOSITION R35 1500	EA	REF	*	*	*	*	*	*		3	1 0	R35
PAFZZ	5905-195-5514	OHM PORM10PCT, 1/2W RC20GF152K (81349) RESISTOR, FIXED, COMPOSITION R36 1500	EA	REF	*	*	*	*	*	*		3	1 0	R36
PAFZZ	5905-195-5514	OHM PORM10PCT, 1/2W RC20GF152K (81349) RESISTOR, FIXED, COMPOSITION R37 1500	EA	REF	*	*	*	*	*	*		3	1 0	R37
PAFZZ	5905-195-5514	OHM PORM10PCT, 1/2W RC20GF152K (81349) RESISTOR, FIXED, COMPOSITION R38 1500	EA	REF	*	*	*	*	*	*		3	1 0	R38
PAFZZ	5905-195-5514	OHM PORM10PCT, 1/2W RC20GF152K (81349) RESISTOR, FIXED, COMPOSITION R39 1500	EA	REF	*	*	*	*	*	*		3	1 0	R39
PAFZZ	5905-195-5514	OHM PORM10PCT, 1/2W RC20GF152K (81349) RESISTOR, FIXED, COMPOSITION R40 1500	EA	REF	*	*	*	*	*	*		3	1 0	R40
PAFZZ	5905-195-5514	OHM PORM10PCT, 1/2W RC20GF152K (81349) RESISTOR, FIXED, COMPOSITION R41 1500	EA	REF	*	*	*	*	*	*		3	1 0	R41
PAFZZ	5905-195-5514	OHM PORM10PCT, 1/2W RC20GF152K (81349) RESISTOR, FIXED, COMPOSITION R42 1500	EA	REF	*	*	*	*	*	*		3	1 0	R42
PAFZZ	5905-185-8510	OHM PORM10PCT, 1/2W RC20GF152K (81349) RESISTOR, FIXED, COMPOSITION R29 10,000	EA	1	*	*	*	*	*	*		3	1 0	R29
PAFZZ	5905-141-0591	OHM PORM5SPCT, 1/2W (USED IN A MODEL ON EQUIP PROC ON ORDER NO. 21719-PH-56) RC20GF103J (81349) BOW RESISTOR, FIXED, COMPOSITION R29 10,000	EA	1	*	*	*	*	*	*		3	1 0	R29

SECTION I I

(1) SMR CODE	(2) FEDERAL STOCK NUMBER	(3) DESCRIPTION REFERENCE NUMBER MFR. CODE USABLE ON CODE		(4) UNIT OF MEAS	(5) QTY INC IN UNIT	(6) 30-DAY DS MAINT ALLOWANCE			(7) 30-DAY GS MAINT ALLOWANCE			(8) 1-YR ALW PER 100 EQUIP CNTGCT	(9) DEPOT MAINT ALW PER 100 EQUIP	(10) ILLUSTRATION	
						(a)	(b)	(c)	(a)	(b)	(c)			(a)	(b)
						1-20	21-50	51-100	1-20	21-50	51-100			FIGURE NO.	ITEM ND.
PAFZZ	5905-254-7087	RESISTOR, FIXED, COMPOSITION R56 68,000 OHM PORM10PCT, 1/2W RC20GF683K (81349)	BOW	EA	1	*	*	*	*	*	*		3		R56
PAFZZ	5935-935-2231	SOCKET, ELECTRON TUBE XI TS101P02 (81350)		EA	13	*	*	*	*	*	*		3	10	X1
PAFZZ	5935-935-2231	SOCKET, ELECTRON TUBE X2 TS101P02 (81350)		EA	REF	*	*	*	*	*	*		3	10	X2
PAFZZ	5935-935-2231	SOCKET, ELECTRON TUBE X3 TS101P02 (81350)		EA	REF	*	*	*	*	*	*		3	10	X3
PAFZZ	5935-935-2231	SOCKET, ELECTRON TUBE X4 TS101P02 (81350)		EA	REF	*	*	*	*	*	*		3	AC	X4
PAFZZ	5935-935-2231	SOCKET, ELECTRON TUBE X5 TS101P02 (81350)		EA	REF	*	*	*	*	*	*		3	10	X5
PAFZZ	5935-935-2231	SOCKET, ELECTRON TUBE X6 TS101P02 (81350)		EA	REF	*	*	*	*	*	*		3	10	X6
PAFZZ	5935-935-2231	SOCKET, ELECTRON TUBE X7 TS101P02 (81350)		EA	REF	*	*	*	*	*	*		3	10	X7
PAFZZ	5935-935-2231	SOCKET, ELECTRON TUBE X8 TS101P02 (81350)		EA	REF	*	*	*	*	*	*		3	AU	X8
PAFZZ	5935-935-2231	SOCKET, ELECTRON TUBE X9 TS101P02 (81350)		EA	REF	*	*	*	*	*	*		3	10	X9
PAFZZ	5935-935-2231	SOCKET, ELECTRON TUBE X10 TS101P02 (81350)		EA	REF	*	*	*	*	*	*		3	10	X10
PAFZZ	5935-935-2231	SOCKET, ELECTRON TUBE X11 TS101P02 (81350)		EA	REF	*	*	*	*	*	*		3	10	X11
PAFZZ	5935-935-2231	SOCKET, ELECTRON TUBE X12 TS101P02 (81350)		EA	REF	*	*	*	*	*	*		3	10	X12
PAFZZ	5935-935-2231	SOCKET, ELECTRON TUBE X13 TS101P02 (813530)		EA	REF	*	*	*	*	*	*		3	10	X13
PAFZZ	5930-498-60773	SWITCH, ROTARY NO-REF-DESIG 176696 (90201)	BOW	EA	1	*	*	*	*	*	*		5		
PAFZZ	5930-548-3377	SWITCH, ROTARY NO-REF-DESIG 212-12 (44655)	BOW	EA	1	*	*	*	*	*	*		5		
XDFZZ		TRANSFORMER, RADIO FREQUENCY LI SCB52987 (80063)		EA	1	*	*	*	*	*	*			7	L1
XDFZZ		TRANSFORMER, RADIO FREQUENCY L2 SCB52983 (80063)	BOW	EA	1	*	*	*	*	*	*			7	L2

SECTION IV

INDEX - FEDERAL STOCK NUMBER AND REFERENCE NUMBER
CROSS-REFERENCE TO FIGURE AND ITEM NUMBER

STOCK NUMBER	FIGURE No.	ITEM No.	STOCK NUMBER	FIGURE NO.
5335-160-5881		E9	5910-101-3856	10
5335-160-5964		E9	5910-101-3856	10
5905-106-9344	10	R43	5910-101-3856	10
5905-106-9344	10	R44	5910-101-3856	10
5905-106-9344	10	R45	5910-101-3856	10
5905-106-9344	10	R46	5910-101-3856	10
5905-106-9344	10	R47	5910-101-3856	10
5905-106-9344	10	R48	5910-101-3856	10
5905-106-9344	10	R49	5910-101-3856	10
5905-106-9344	10		5910-101-3856	10
5905-106-9344	10	R50	5910-101-3856	10
5905-106-9344	10	R51	5910-101-3856	10
5905-106-9344	10	R52	5910-101-3856	10
5905-106-9344	10	R53	5910-101-3856	10
5905-106-9344	10	R54	5910-101-3856	10
5905-106-9344	10	R55	5910-101-3856	10
5905-141-0591	10	E29	5910-101-3856	10
5905-185-8510	10	R29	5910-101-3856	10
5905-195-5514	10	R30		
5905-195-5514	10	R31		
5905-195-5514	10	R32		
5905-195-5514	10	R33		
5905-195-5514	10	R34		
5905-195-5514	10	R35		
5905-195-5514	10	R36		
5905-195-5514	10	R37		
5905-195-5514	10	R38		
5905-195-5514	10	R39		
5905-195-5514	10	R40		
5905-195-5514	10	R41		
5905-195-5514	10	R42		
5905-252-5434	10	R16	5930-498-6773	
5905-252-5434	10	R17	5930-548-3377	
5905-252-5434	10	R18	5935-192-4858	
5905-252-5434	10	R19	5935-199-7022	
5905-252-5434	10	R20	5935-404-7981	10
5905-252-5434	10	R21	5935-404-7981	10
5905-252-5434	10	R22	5935-404-7981	10
5905-252-5434	10	R23	5935-404-7981	10
5905-252-5434	10	R24	5935-404-7981	10
5905-252-5434	10	R25	5935-404-7981	10
5905-252-5434	10	R26	5935-404-7981	10
5905-252-5434	10	R27	5935-404-7981	10
5905-252-5434	10	R28	5935-404-7981	10
5905-254-7087		R56	5935-404-7981	10
5910-101-3856	10	C10	5935-404-7981	10
5910-101-3856	10	C11	5935-539-5934	3
5910-101-3856	10	C12	5935-935-2231	10
5910-101-3856	10	C13	5935-935-2231	10
5910-101-3856	1 0	C14	5935-935-2231	10
5910-101-3856	1 0	C15	5935-935-2231	10
5910-101-3856	1 0	C16	5935-935-2231	10
5910-101-3856	1 0	C17	5935-935-2231	10
5910-101-3856	1 0	C18	5935-935-2231	10
5910-101-3856	1 0	C19	5935-935-2231	10
5910-101-3856	1 0	C20	5935-935-2231	10
5910-101-3856	1 0	C21	5935-935-2231	10
5910-101-3856	1 0	C22	5935-935-2231	10
5910-101-3856	1 0	C23	5935-935-2231	10
5910-101-3856	1 0	C24	5935-935-2231	10
5910-101-3856	1 0	C25	5970-557-2350	
5910-101-3856	1 0	C26	5970-557-2350	
5910-101-3856	1 0	C27	6210-186-8017	
5910-101-3856	1 0	C28	6210-270-4115	
5910-101-3856	1 0	C29	6240-155-8706	10
5910-101-3856	1 0	C30		

SECTION IV

REFERENCE NO.	MFR CODE	FIG. NO.	ITEM NO.	REFERENCE NO.	MFR CODE	FIG. NO.	ITEM NO.
CM30C001K	81349	10	C40	CP2K680	72982	10	C49
CM30C001K	81349	10	C41	CP2K680	72982	10	C50
CM30C001K	81349	10	C42	CP2K680	72982	10	C51
CM30C001K	81349	10	C43	CP2K680	72982	10	C52
CM30C001K	81349	10	C44		58474	10	L4
CM30C001K	81349	10	C45	C5	58474	10	L5
CM30C001K	81349	10	C46	C6	58474	10	L3
CM30C001K	81349	10	C47	JJ092	81349		J12
CM30C001K	81349	10	C48	JJ099	81349	3	J12
CM30C001K	81349	10	C49	MS15571-2	96906	10	E1
CM30C001K	81349	10	C50	RC20GF101K	81349	10	R43
CM30C001K	81349	10	C51	RC20GF101K	81349	10	a44
CM30C001K	81349	10	C52	RC20GF101K	81349	10	R45
CM35B392K	81349	10	C1	RC20GF101K	81349	10	K46
CM35B392K	81349	10		RC20GF101K	81349	10	R47
CM35B392K	81349	10	C3	RC20GF101K	81349	10	R48
CM35B392K	81349	10		RC20GF101K	81349	10	R49
CM35B392K	81349	10	C5	RC20GF101K	81349	10	R50
CM35B392K	81349	10	C6	RC20GF101K	81349	10	R51
CM35B392K	81349	10	C7	RC20GF101K	81349	10	R52
CM35B392K	81349	10	C8	RC20GF101K	81349	10	R53
CM35B392K	81349	10	C9	RC20GF101K	81349	10	R54
CM35B392K	81349	10	C10	RC20GF101K	81349	10	R55
CM35B392K	81349	10	C11	RC20GF102K	81349	10	R4
CM35B392K	81349	10	C12	RC20GF102K	81349	10	R5
CM35B392K	81349	10	C13	RC20GF102K	81349	10	R6
CM35B392K	81349	10	C14	RC20GF102K	81349	10	R7
CM35B392K	81349	10	C15	RC20GF102K	81349	10	R8
CM35B392K	81349	10	C16	RC20GF102K	81349	10	a9
CM35B392K	81349	10	C17	RC20GF102K	81349	10	R10
CM35B392K	81349	10	C18	RC20GF102K	81349	10	R11
CM35B392K	81349	10	C19	RC20GF102K	81349	10	R12
CM35B392K	81349	10	C20	RC20GF102K	81349	10	R13
CM35B392K	81349	10	C21	RC20GF102K	81349	10	R14
CM35B392K	81349	10	C22	RC20GF102K	81349	10	R15
CM35B392K	81349	10	C23	RC20GF103J	81349	10	R29
CM35B392K	81349	10	C24	RC20GF103K	81349	10	R29
CM35B392K	81349	10	C25	RC20GF121J	81349	10	R16
CM35B392K	81349	10	C26	RC20GF121J	81349	10	R17
CM35B392K	81349	10	C27	RC20GF121J	81349	10	R18
CM35B392K	81349	10	C28	RC20GF121J	81349	10	R19
CM35B392K	81349	10	C29	RC20GF121J	81349	10	R20
CM35B392K	81349	10	C30	RC20GF121J	81349	10	R21
CM35B392K	81349	10	C31	RC20GF121J	81349	10	R22
CM35B392K	81349	10	C32	RC20GF121J	81349	10	R23
CM35B392K	81349	10	C33	RC20GF121J	81349	10	R24
CM35B392K	81349	10	C34	RC20GF121J	81349	10	R25
CM35B392K	81349	10	C35	RC20GF121J	81349	10	R26
CM35B392K	81349	10	C36	RC20GF121J	81349	10	R27
CM35B392K	81349	10	C37	RC20GF121J	81349	10	A28
CM35B392K	81349	10	C38	RC20GF152K	81349	10	R30
CM35B392K	81349	10	C39	RC20GF152K	81349	10	R31
CP2K680	72982	10	C43	RC20GF152K	81349	10	R32
CP2K680	72982	10	C41	RC20GF152K	81349	10	R33
CP2K680	72982	10	C42	RC20GF152K	81349	10	R34
CP2K680	72982	10	C43	RC20GF152K	81349	10	R35
CP2K680	72982	10	C44	RC20GF152K	81349	10	R36
CP2K680	72982	10	C45	RC20GF152K	81349	10	R37
CP2K680	72982	10	C46	RC20GF152K	81349	10	R38
CP2K680	72982	10	C47	RC20GF152K	81349	10	R39
CP2K680	72982	10	C48	RC20GF152K	81349	10	R40

SECTION IV

REFERENCE NO.	MFR CODE	FIG. NO.	ITEM NO.	REFERENCE NO.	MFR CODE	FIG. NO.	ITEM NO.
RC20GF152K	81349	10	R41	TS101P02			X8
RC20GF152K	81349	10	R42	TS101P02		10	X9
RC20GF63JK	81349		A58	TS101P02		10	X10
SC852969	80063	10	J1	TS101P02		10	X11
SC852969	80063	10	J2	TS101P02		10	X12
SC852969	80063	10	J3	TS101P02		10	X13
SC852969	80063		J4	176696			
SC852969	80063	10	J5	212-12			
SC852969	80063		J6	25			
SC852969	80063	10	J7	338A			
SC852969	80063	10	J8	37202			E6
SC852969	80063		J9	37202			E7
SC852969	80063	10	J10	48187			H1
SC852969	80063	10	J11	50			I1
SC852982-1	80063	10	L3	6AC7W		10	V1
SC852982-2	80063		L4	6AC7W		10	V2
SC852982-2	80063	10	L5	6AC7W		10	V3
SC852983	80063	7	L2	6AC7W		10	V4
SC852987	80063	7	L1	6AC7W		10	V5
S308-64-402a	75376		E9	6AC7W		10	V6
S308-64db4u2	75376		E9	6AC7W		10	V7
S309-64-4J2b	75376		E9	6AC7W		10	V8
TS101P02	81350	10	X1	6AC7W		10	V9
TS101P02	81350	10	X2	6AC7W		10	V10
TS101P02	81350	10	X3	6AC7W		10	V11
TS101P02	81350	10	X4	6AC7W		10	V12
TS101P02	81350	10	X5	6AC7W		10	V13
TS101P02	81350	10	X6	938A		10	E4
TS101P02	81350	10	X7	938A		10	E5

By Order of the Secretary of the Army:

FRED C. WEYAND
General, United States Army
Chief of Staff

Official:

VERNE L. BOWERS
Major General, United States Army
The Adjutant General

Distribution :

Active Army:

CNGB (1)
TSG (1)
USAARENBD (1)
USASA (2)
TRADOC (2)
AMC (1)
MICOM (1)
TECOM (2)
ARADCOM (2)
ARADCOM Rgn (1)
OS Maj Comd (2)
USACC (2)
HISA (Ft Monmouth) (18)
Armies (1)
USASESS (5)
Svc Colleges (1)
Fort Huachuca (5)
WSMR (1)

NG: State AG (3)

USAR: None

For explanation of abbreviations used, see 310-50.

Fort Carson
USAERDAA (1)
USAERDAW (1)
Army Dep (1) except
LBAD (10)
SAAD (80)
TOAD (14)
ATAD (10)
USA Dep (1)
Sig Set USA Dep (2)
Sig Dep (2)
SigFLDMS (1)
Ft Richardson (ECOM Ofc) (1)
Units org under fol TOE :
(1 copy each unit)
11-16
11-117
11-500 (AA-AC)
29-134
29-136

END

11-26-82

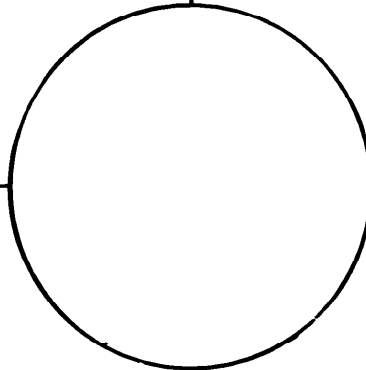
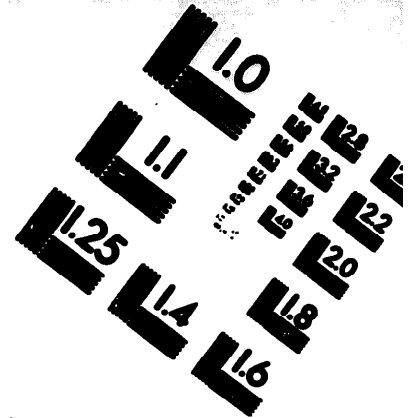
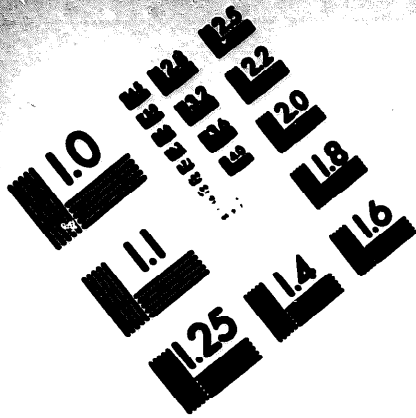
DATE





DEPARTMENT OF THE ARMY

MICROFORM TEST TARGET



150 MM

1.0 mm (e= 0.1 mm)

ABCDEFGHIJKLMN OPQRSTUVWXYZ 1234567890
abcdefghijklmnopqrstuvwxyz %& / # 1/2 1/4 3/4 —+ x & @ *

1.5 mm (e= 1.09 mm)

ABCDEFGHIJKLMN OPQRSTUVWXYZ 1234567890
abcdefghijklmnopqrstuvwxyz %& / # 1/2 1/4 3/4 —+ x & @ *

2.0 mm (e= 1.37 mm)

ABCDEFGHIJKLMN OPQRSTUVWXYZ
abcdefghijklmnopqrstuvwxyz
1234567890 \$ % & / # 1/2 1/4 3/4 —+ x & @ *

2.5 mm (e= 1.77 mm)

ABCDEFGHIJKLMN OPQRSTUVWXYZ
abcdefghijklmnopqrstuvwxyz
1234567890 \$ % & / # 1/2 1/4 3/4 —+ x & @ *

1.0 mm (e= 0.1 mm)

ABCDEFGHIJKLMN OPQRSTUVWXYZ 1234567890
abcdefghijklmnopqrstuvwxyz %& / # 1/2 1/4 3/4 —+ x & @ *

1.5 mm (e= 1.09 mm)

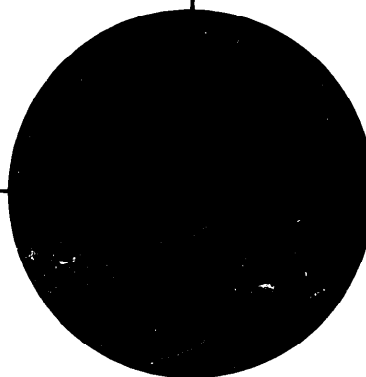
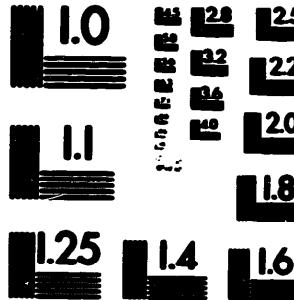
ABCDEFGHIJKLMN OPQRSTUVWXYZ 1234567890
abcdefghijklmnopqrstuvwxyz %& / # 1/2 1/4 3/4 —+ x & @ *

2.0 mm (e= 1.37 mm)

ABCDEFGHIJKLMN OPQRSTUVWXYZ
abcdefghijklmnopqrstuvwxyz
1234567890 \$ % & / # 1/2 1/4 3/4 —+ x & @ *

2.5 mm (e= 1.77 mm)

ABCDEFGHIJKLMN OPQRSTUVWXYZ
abcdefghijklmnopqrstuvwxyz
1234567890 \$ % & / # 1/2 1/4 3/4 —+ x & @ *



200 MM

250 MM

